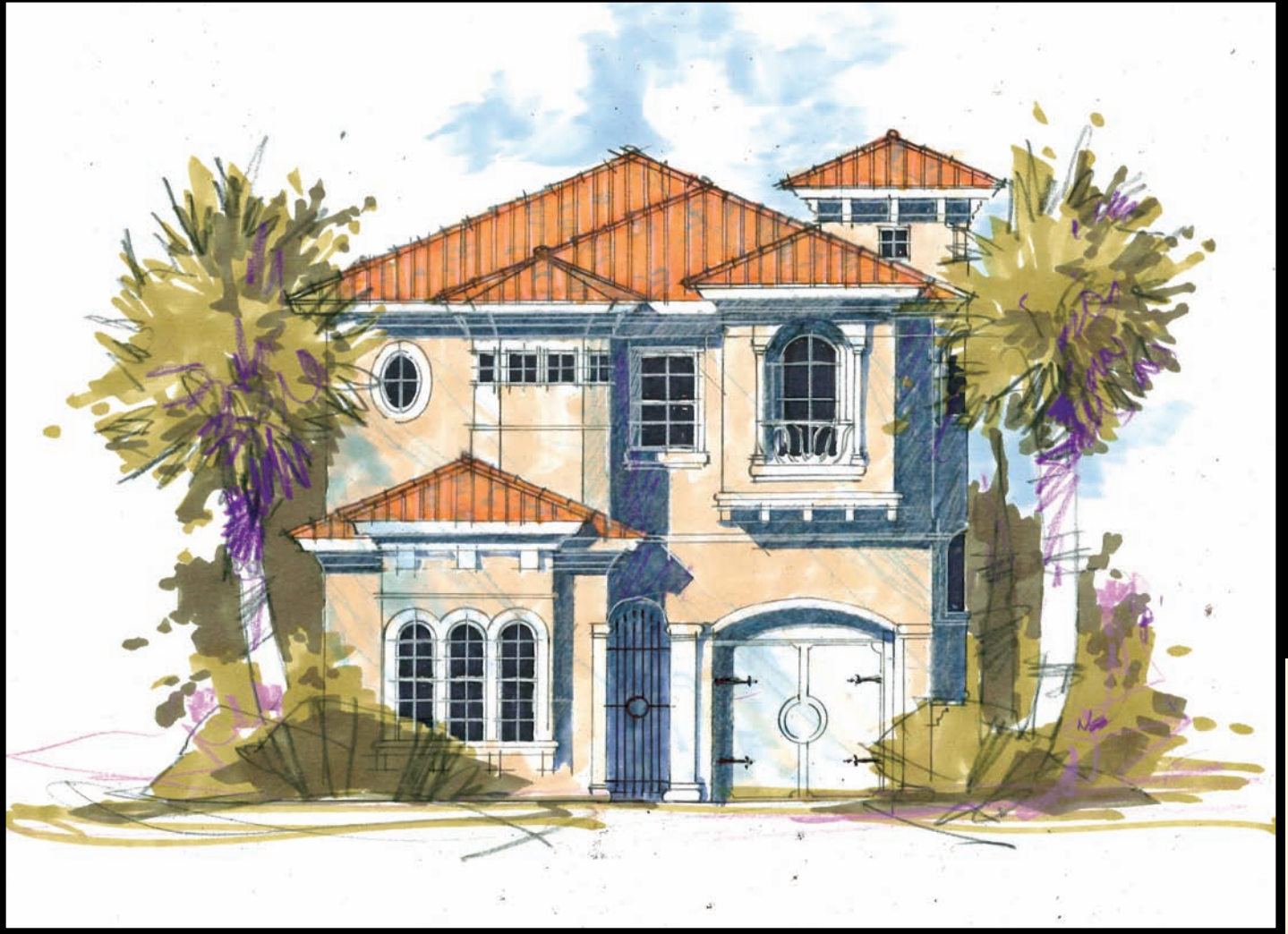


# St. Tropez



## *The St. Tropez*

Private Courtyard. Coffered ceiling foyer leads to open and bright family room ready for entertaining with a custom built-in and a full service bar. Gourmet Kitchen with radius top feature at the center island. Large lanai with great summer kitchen. Upstairs features fantastic master suite with its own private balcony and sun deck and two sided fireplace. There are two more en suite bedrooms upstairs with a fourth bedroom suite in lie of garage available as an option.

1st Floor Living	1,265 sq.ft.
2nd Floor Living	1,690 sq.ft.
<b>Total Living</b>	<b>2,955 sq.ft.</b>

(Optional Guest)	368 sq.ft.
------------------	------------

Garage	368 sq.ft.
Golf Cart Garage	240 sq.ft.
Generator	35 sq.ft.
Lanai	314 sq.ft.
Entry	289 sq.ft.
Balcony	315 sq.ft.
<b>Total Under Roof</b>	<b>4,516 sq.ft.</b>

Juliet Balcony	6 sq.ft.
Courtyard Wall	14 sq.ft.
Sun Deck	227 sq.ft.
<b>Total</b>	<b>4,763 sq.ft.</b>



www.ContinentalHomesAndInteriors.com  
Contact Bill Cook (407) 644-5129

# St. Tropez

