

The Seville



The Seville

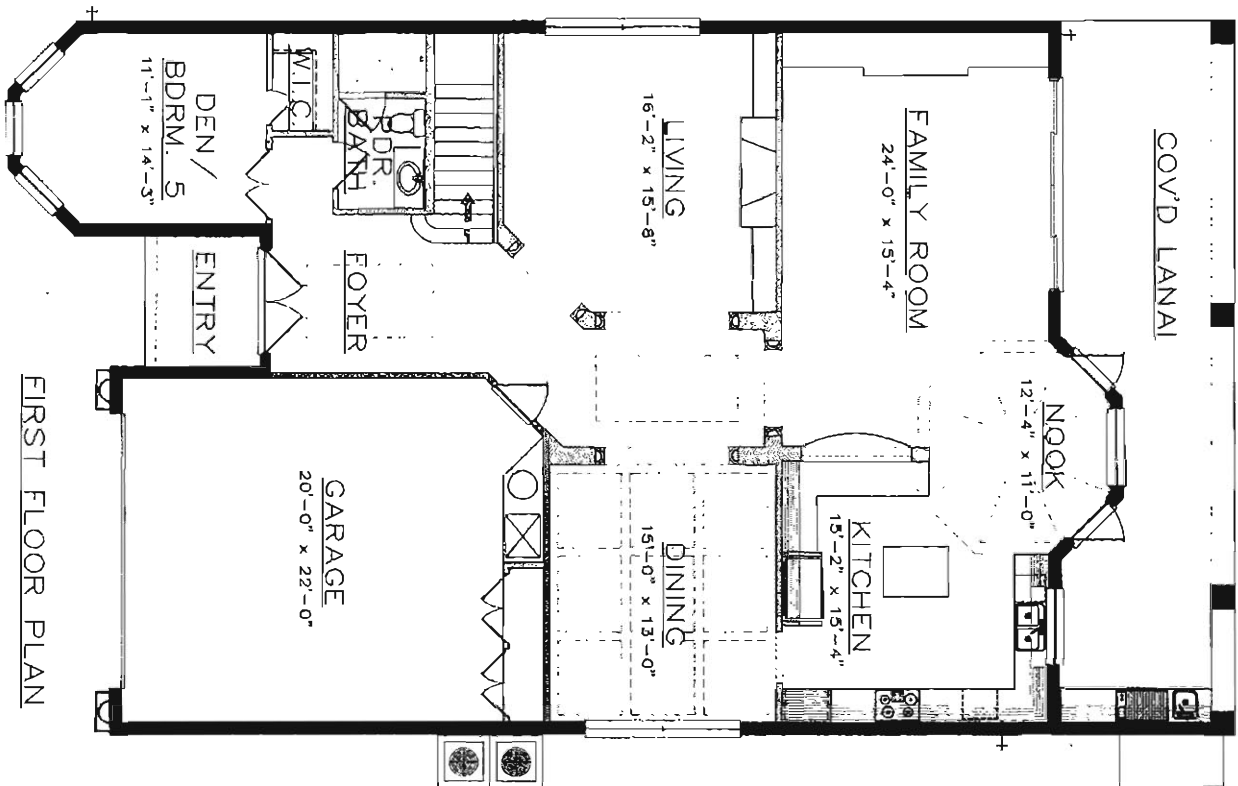
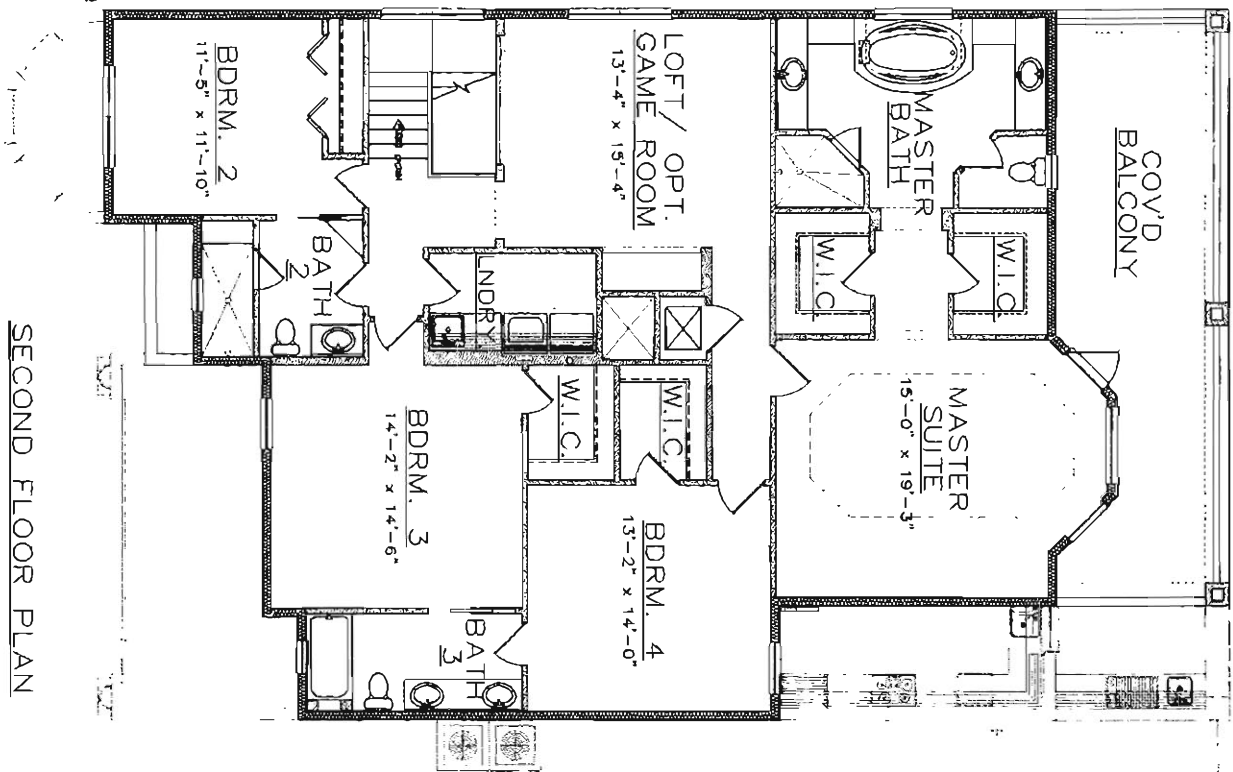
5 bedrooms, 4 bathrooms, game room,
double garage.

First floor	1,769 sq.ft.
Second floor	1,948 sq.ft.
Total Living	3,717 sq.ft.
Entry	51 sq.ft.
2-Car garage	520 sq.ft.
Lanai	381 sq.ft.
Balcony	314 sq.ft.
Total under Roof	4,983 sq.ft.
Front Parapet	32 sq.ft.
Total	5,015 sq.ft.

CONTINENTAL^{INC.}
DISTINCTIVE HOMES & INTERIORS

www.ContinentalHomesAndInteriors.com

Seville



Renderings & floor plans are conceptual in nature, used for illustrative purposes and are subject to change without notice. Landscape depicted may not be to scale and may vary. Window and door locations may vary per elevation.

© Copyright Continental Inc. 2004