

The Casa Fina



The Casa Fina

5 en suite bedrooms, plus three half baths, game room with bar, library, 3 car garage, outdoor living with fireplace.

1st Floor Living	4,839 sq.ft.
2nd Floor Living	2,306 sq.ft.
Guest Suite	429 sq.ft.
Total Living	7,574 sq.ft.

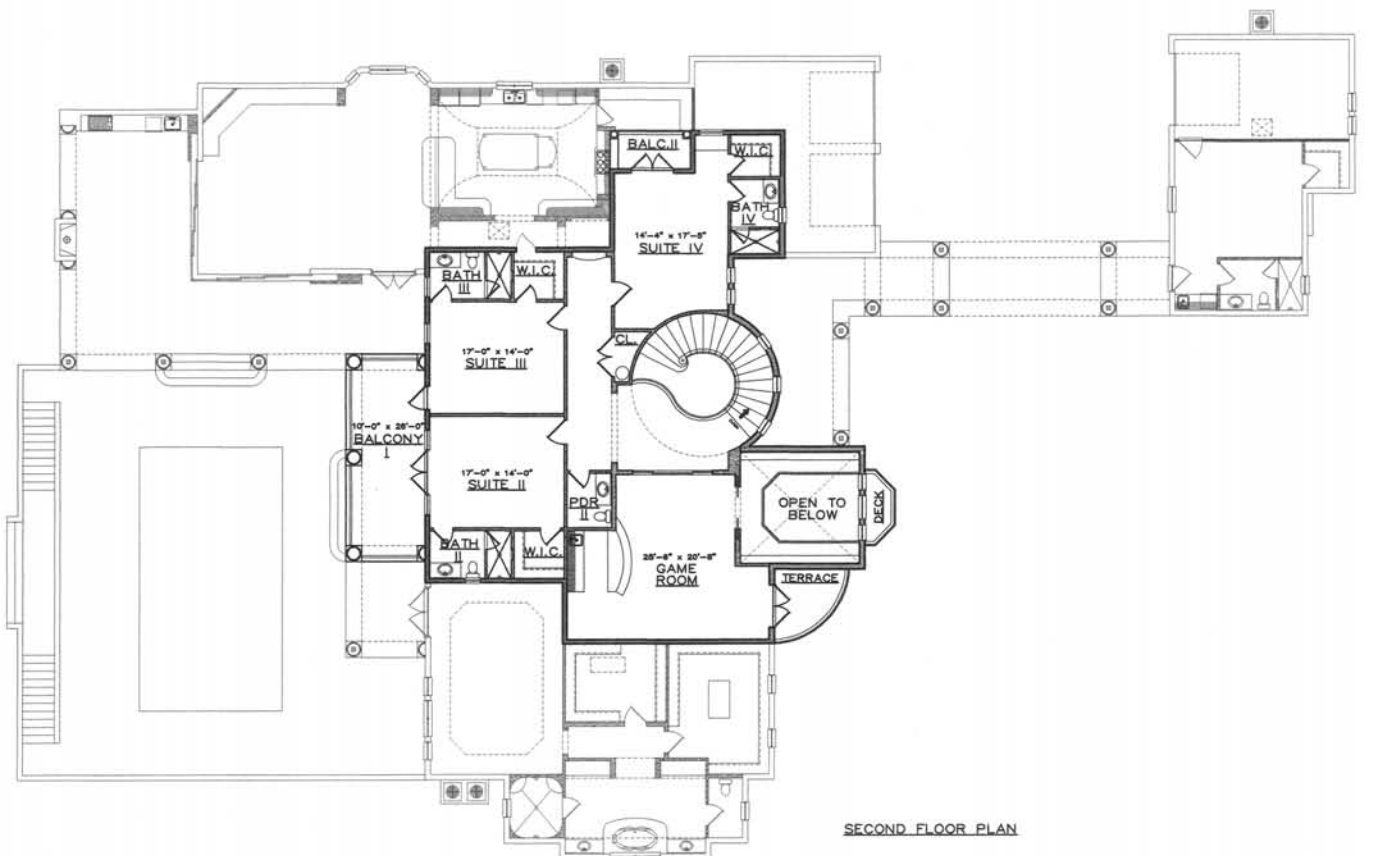
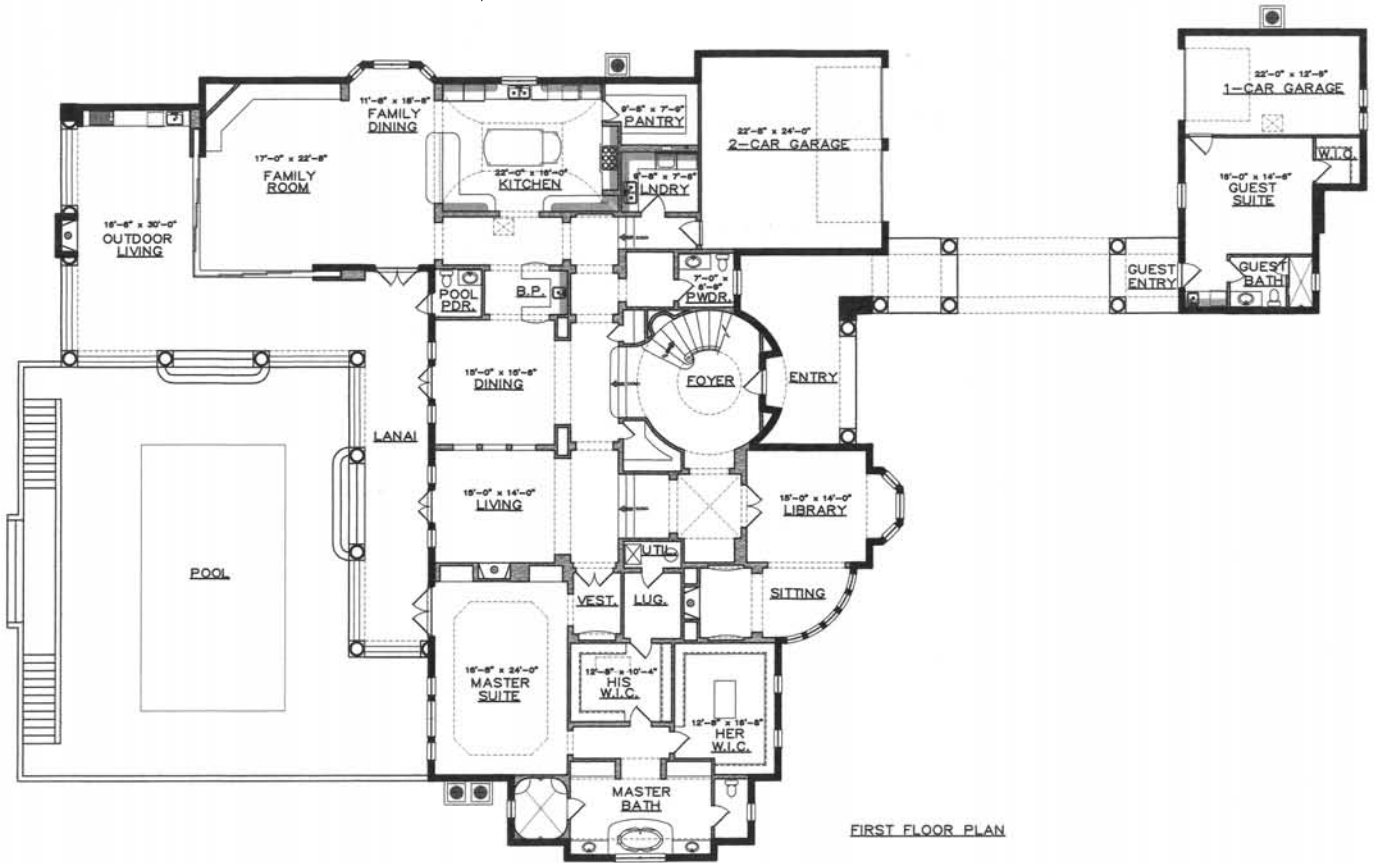
Entries	639 sq.ft.
1-Car Garage	308 sq.ft.
2-Car Garage	591 sq.ft.
Balcony I	260 sq.ft.
Balcony II	50 sq.ft.
Lanai	1,327 sq.ft.
Total Under Roof	10,749 sq.ft.

Pool Stairs	327 sq.ft.
Deck	31 sq.ft.
Terrace	67 sq.ft.
Total	11,174 sq.ft.



www.ContinentalHomesAndInteriors.com

Casa Fina



Renderings & floor plans are conceptual in nature, used for illustrative purposes and are subject to change without notice. Landscape depicted may not be to scale and may vary. Window and door locations may vary per elevation.